



RESIDE
STOCKPORT



44 123 Palatine Road
, Didsbury, M20 3YA

£1,175 Per Month



44 123 Palatine Road

, Didsbury, M20 3YA

We're delighted to welcome you to The Rossett in Didsbury, our new development of modern one and two-bedroom apartments, available for market rent.

These stylish apartments at The Rossett offer a perfect blend of contemporary comfort and high-specification finishes, set within one of Manchester's most sought-after leafy suburbs. Thoughtfully designed with modern living in mind, each home features spacious open-plan layouts, sleek fitted kitchens with integrated appliances, elegant bathrooms, and quality flooring throughout.

Large windows allow for plenty of natural light, creating bright and inviting living spaces ideal for both relaxing and entertaining. Selected apartments also benefit from private outdoor space, providing the perfect spot to unwind.

Ideally located, The Rossett offers excellent transport links into Manchester city centre, along with easy access to local shops, cafes, green spaces and amenities, combining the tranquillity of suburban living with the convenience of city life.

Local Area

The location is great for commuting, heading out to the countryside, or just nipping into Didsbury to sample all the great independent shops and restaurants the suburb has to offer.

Beyond the luxurious interiors, the development in Didsbury boasts plenty of local amenities and a great range of independent cafes and restaurants to explore. While the surrounding area is dotted with green spaces such as the stunning Fletcher Moss park, allowing residents to



enjoy the beauty of nature while still benefiting from great connections to the city centre.

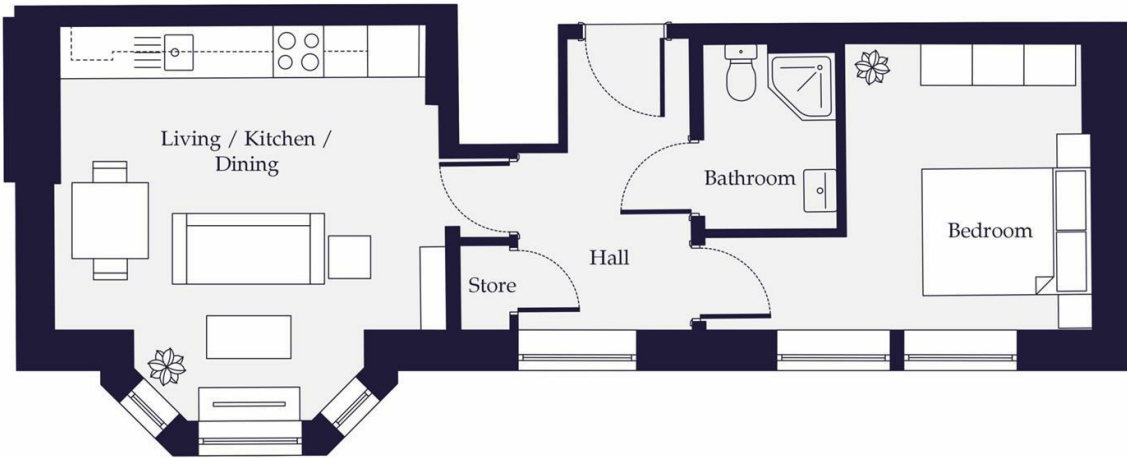
With Manchester city centre just 5 miles away and easily accessible by the nearby Metrolink stop, you can conveniently head into the city on a weekend or commute to work. The Rossett is roughly 1 mile from Princes Parkway which will get you everywhere you need to be and offers great connections to local motorways.

You'll find local shops along Burton Road, including a local Co-op convenience store and an off-licence. Larger supermarkets can be found within a 10 minutes drive, with both Aldi and Tesco Extra stores within easy reach of the development.

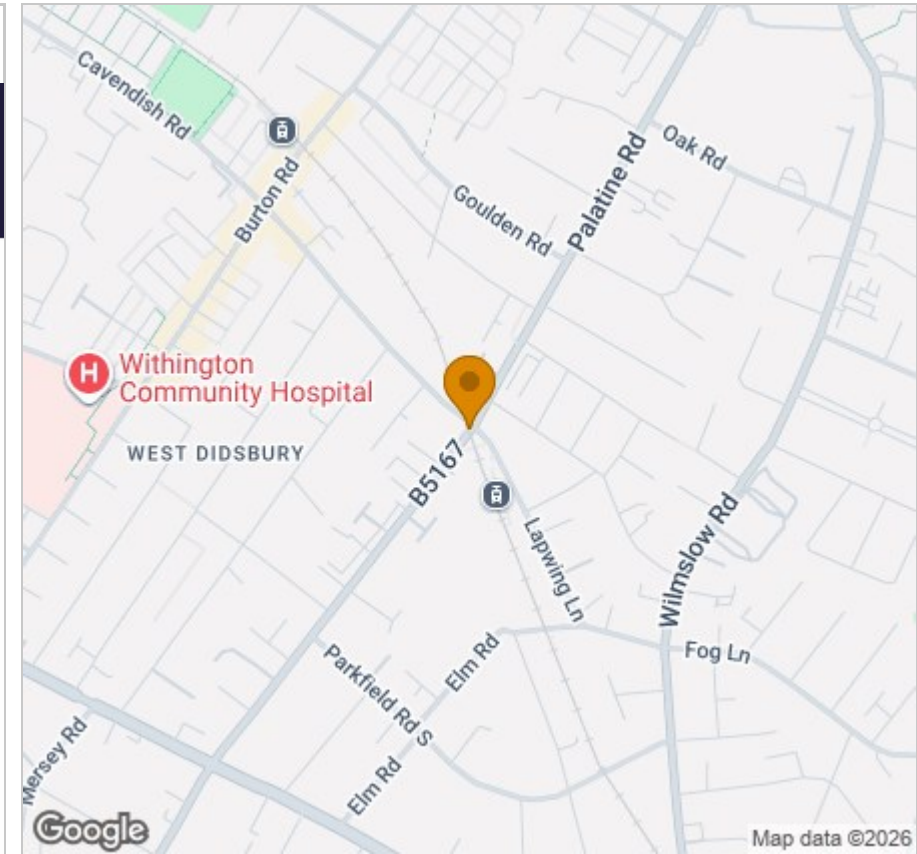
- Sought after West Didsbury location
- New modern, spacious apartments
- Ready to move into
- One Bedroom
- First Floor
- Pets considered (an extra charge will apply)
- Unfurnished
- Local transport links
- Parking options available
- EPC rating B

Floor Plan

THE ROSSETT - APARTMENT 4 1 BEDROOM APARTMENT



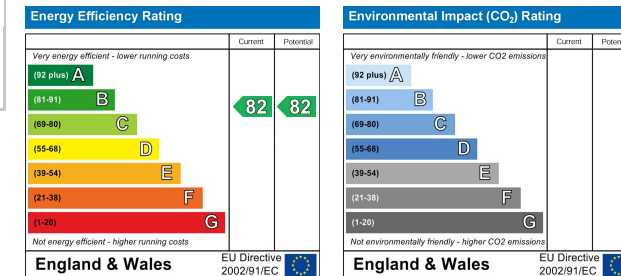
Area Map



Viewing

Please contact our Reside Stockport Office on 0161 808 0660 if you wish to arrange a viewing appointment for this property or require further information.

Energy Efficiency Graph



These particulars, whilst believed to be accurate are set out as a general outline only for guidance and do not constitute any part of an offer or contract. Intending purchasers should not rely on them as statements of representation of fact, but must satisfy themselves by inspection or otherwise as to their accuracy. No person in this firm's employment has the authority to make or give any representation or warranty in respect of the property.

57a St Petersgate, Stockport, Cheshire, SK1 1DH

Tel: 0161 808 0660 Email: info@residestockport.com www.residestockport.com